

# MINERALS

Infrastructure upgrades and maintenance, mine closure, plant decommissioning and demolition, tailings management, and progressive rehabilitation across the resource lifecycle.

## THE CHALLENGE

The Australian minerals sector is upgrading and closing assets at scale. As coal mines transition to closure across the Hunter, Bowen and Latrobe Valleys, and legacy alumina, lead, zinc and copper smelters also approach end-of-life; upgrades to ageing infrastructure in Western Australia are needed to meet continued demand for iron ore. Boards face mounting pressure to demonstrate that closure liabilities are not just provisioned but actively executable, with balance sheet rehabilitation provisions a material factor in corporate valuations.

- Wide, unique and site specific contaminant inventory – heavy metals, refractories, acid mine drainage, sulphides, tailings, NORM, mercury, asbestos, PFAS and hydrocarbons
- Regional and remote site locations; tropical and extreme weather conditions; local community and Traditional Owner engagement
- Closure provision erosion under conventional staged contracting models
- Investor, regulator and community demand for delivered land outcomes – not deferred problems
- Progressive rehabilitation requirements over multi-decade execution horizon

## THE CMA SOLUTION

### Continuous closure works package – not staged contracts

Hazmat decontamination and removal, decommissioning, demolition, civil reinstatement and rehabilitation delivered as a single integrated program by one team. The conventional multi-contractor interface, associated cost growth and schedule slippage it embeds is eliminated.

### Mine rehabilitation at the largest scale in Australia

Up and down the east coast of Australia, CMA is delivering superior outcomes via the combined demolition and progressive rehabilitation of legacy coal fired generation and mine rehabilitation. These projects demand multi-decade execution capabilities and proven scale that few contractors can replicate. In Western Australia, CMA continues to execute some of the most complex decontamination, decommissioning, demolition, and closure projects as mining infrastructure is renewed, replaced or curtailed and historical sites transition from operating asset to validated land return and relinquishment.

### Self-perform civil and integrated heavy plant

Direct mobilisation of highly specialist heavy plant and equipment from a 6,000+ asset fleet (740+ excavators, 191 dump trucks, 92 graders and dozers). Proven transport and logistics capabilities to meet regional and remote or constrained site locations. No third-party plant dependency. Self-perform progressive rehabilitation bulk earthworks, drainage, capping, contouring, revegetation, delivered by the same teams executing the early-works enabling package.

### Tier-one operator HSEQ familiarity

Active relationships and demonstrated execution under BHP, Rio Tinto, Glencore and AGL HSEQ frameworks across NSW, QLD, WA, SA, NT and TAS. Established protocols for Traditional Owner engagement, local community liaison, and remote-area logistics.

### Tailored Sector Capabilities

Mine closure planning, cost estimating, and multi criteria method assessments	Processing plant, conveyor and crushing/ grinding circuit dismantling
Smelter, refinery and reduction line decommissioning, decontamination, disposal	Train load-out and rail infrastructure decommissioning
Tailings storage facility rehabilitation	Acid mine drainage water treatment
Waterway realignment and drainage reinstatement	Bulk earthworks reprofiling – large-scale void closure
Heavy metals and refractory abatement	Capping, contouring and topsoil placement
NORM management in mineral sands and uranium plants	Revegetation, seeding and long-term monitoring setup

# PROJECT PORTFOLIO



ENGIE Hazelwood Alliance



AGL Liddell Power Station  
Ash Dam Capping



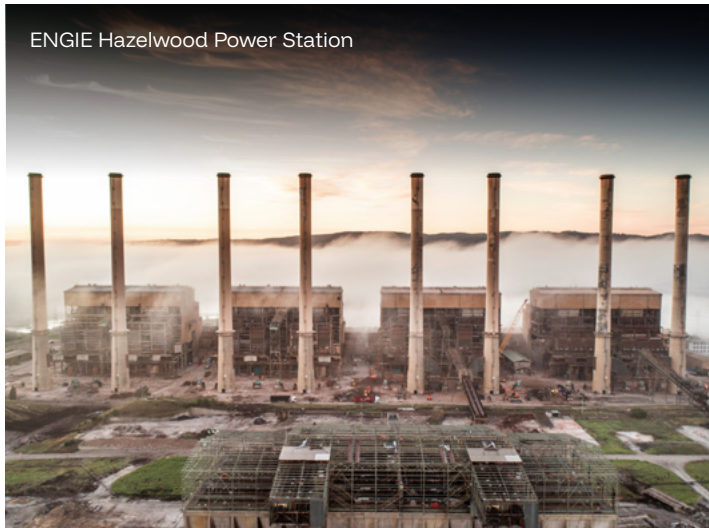
AGL Liddell Power Station  
Sedimentation Basin



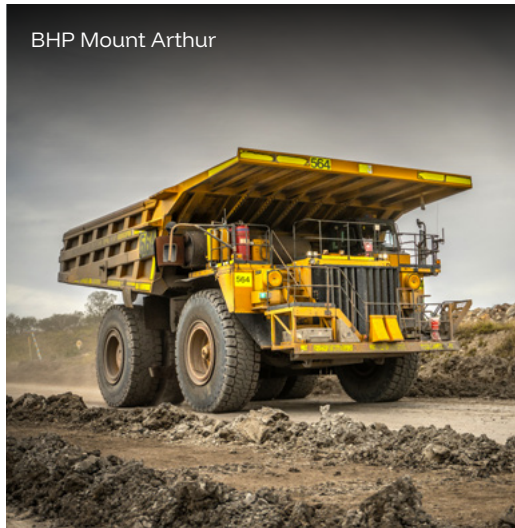
Rio Tinto CD1C Fixed Asset Closure



Glencore Baal Bone Colliery



ENGIE Hazelwood Power Station



BHP Mount Arthur



Rio Tinto Peninsula Palms